

## Materials

At the beginning of our activity we noticed that mainly natural materials should be used for the tachyonization process. Natural and environmentally friendly materials feature a relatively perfect and regular atomic structure.

And, according to one of the principles of nature, a regular atomic structure represents a very important criterion.

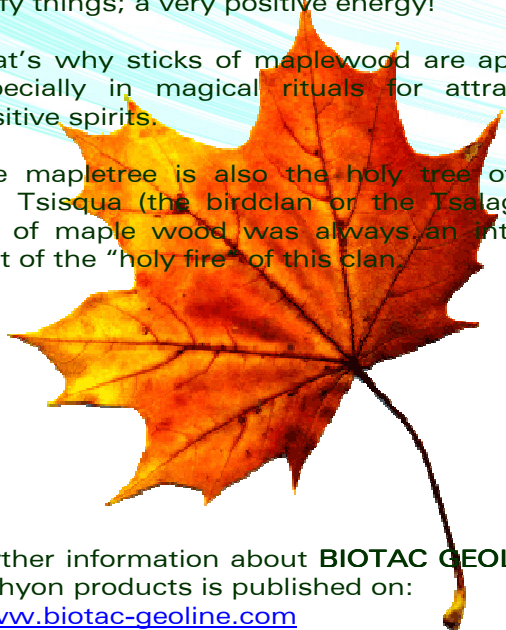
Optimal materials to be tachyonized are silicon and gold. Both of them are considered having an exceptional perfect structure and are therefore highly qualified for being tachyonized.

Only pure silicon, gold and maple wood are used for the production of PHAROS II.

The maple tree is „life donating“ tree. The Akunęsyęni (Iroquois Native Indians) consider its juice as „Honey of Life“. This gentle sweetness combines the characteristics of attraction and allurement or the possibility to unify things; a very positive energy!

That's why sticks of maplewood are applied especially in magical rituals for attracting positive spirits.

The mapletree is also the holy tree of the Ani Tsisqua (the birdclan or the Tsalagi): a log of maple wood was always an integral part of the "holy fire" of this clan.



Further information about BIOTAC GEOLINE® tachyon products is published on:  
[www.biotac-geoline.com](http://www.biotac-geoline.com)

## Craftsmanship

PHAROS II is completely manufactured in our own workshop.

From the woodworking right up to the gilding of the indigo blue silicon-disc; all steps are processed very accurately by our collaborators.

Only genuine materials are used for all the components to build PHAROS II.

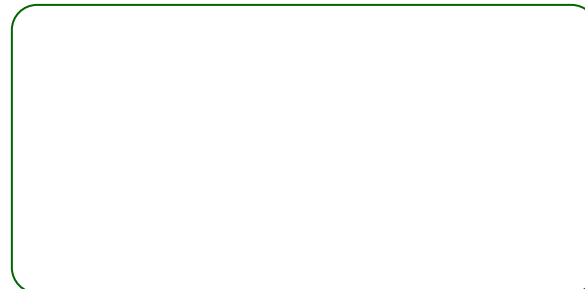


PHAROS II

CHF 1498,00

\* \* \* \* \*

Your BIOTAC TECLINE® sales partner:



# PHAROS II

wide space for well-being  
to feel at ease  
protection and force



**BIOTAC  
GEO LINE**

TACHYON ENERGY SYSTEMS

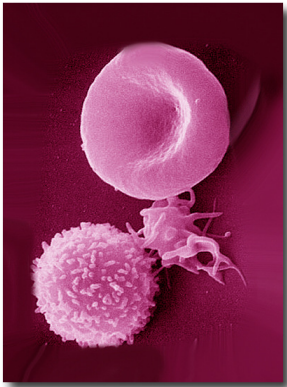
## History of origins

For several years we have tried to develop a system that procures wellbeing and protection and which is able to harmonize electric and electromagnetic radiation emitted by external sources such as mobile phone antennas.

Since physicians are more concerned with the topic electro smog, during the past years many new disease patterns have been detected. The plot thickens as it is a fact, that children learning in irradiated schools show a statistically significant minor chance to claim a place in high school.



The organisms constitutes a closed circuit and transports these electrical impulses from "up" to "down" and from "left" to "right", across the whole body. The immune system feels clearly that the body cells assimilates much less oxygen if exposed near to harmful radiation.



Due to this very subtle electrical stimulation the energy flow between the cell membrane and the cell nucleus and the performance of the synapses (junction between the nerve cells) is evidentially disturbed.



## Goals

Animated by statements on the part of our customers and the media we decided to develop a Tachyon Device which is able to harmonize the hereinafter mentioned pathogenic influences:

- Hartmann-Grid
- Curry-Grid
- Water-Veins
- Faults
- Power lines
- Power supply lines for trains / buses
- Mobile phone antennas
- UMTS signals and WiFi radiation

After a testing phase of several months we are proud to present a device which is unique:

# PHAROS II

Place it -oriented towards north- in your living area or in your office. We recommend to put it on a shelf or a furniture at the height in between your bellybutton and your solar plexus (approx. 1,30m from the floor).



## Symbiosis of natural laws

During the process of implementation of mind to matter, for all the Tachyon Products developed by our company -just like for **PHAROS II**- the elementary principles of natural laws are synchronized with the basic requirements.

First and foremost we take advantage of the knowledge about the "golden rule", the so called *proportio divina*. At least since the Renaissance, many artists and architects have proportioned their works to approximate the golden ratio, believing this proportion to be aesthetically and energetically pleasing.

The knowledge about bio-physical effects of colours, natural laws about form and matter and our know-how about Tachyon-Energy have also been considered for the realization of PHAROS II. Furthermore we assimilated information of the oeuvres of Leonardo da Pisa, J. W. von Goethe and Leonardo da Vinci.

